

# Keep valuable wood out of the waste stream!

Please consider salvaging fallen trees that are economically valuable

## Remove logs from waste piles if:

- Diameter is 12 inches or more
- Straight
- Solid

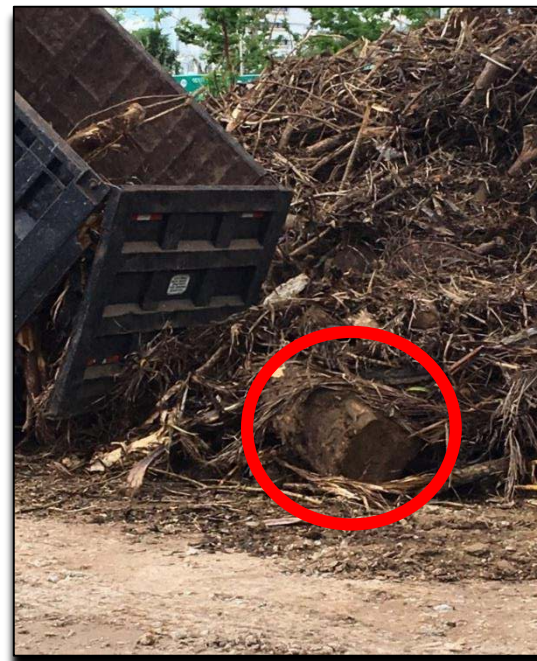
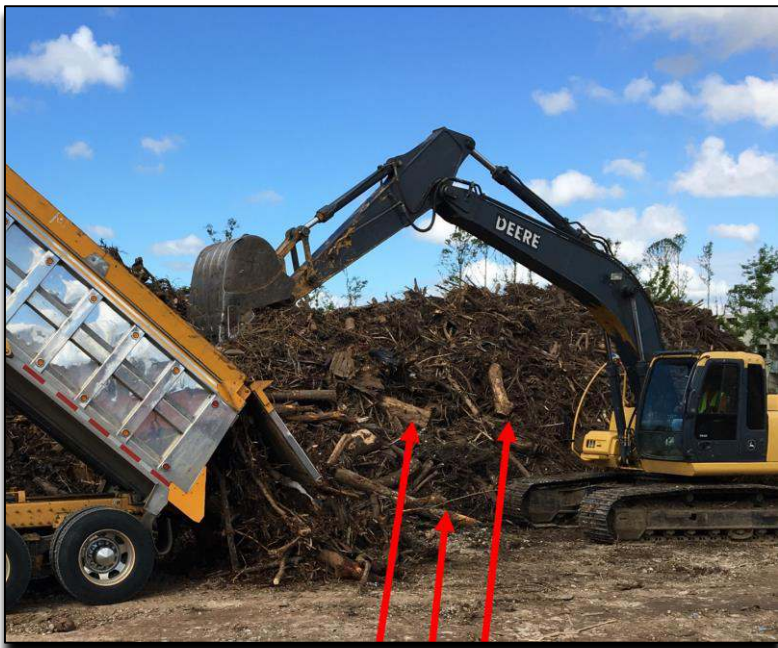
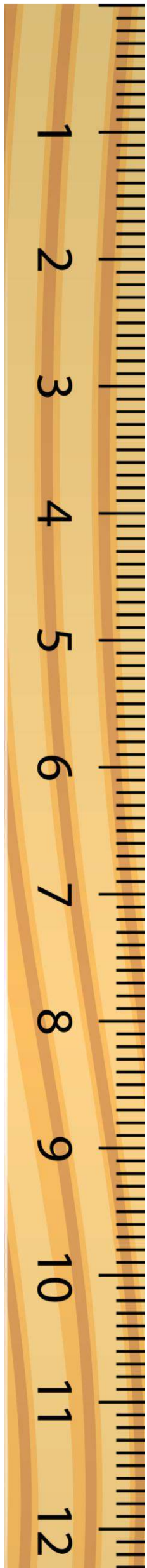


## Do not remove:

- Palms
- Split, broken or rotten logs

## Value and use of logs also depend on their length!

- 8 feet or more: *high value for timber*
- 4-8 feet: *high value for furniture*
- Less than 4 feet: *high value for artisans*



## How to store logs?

Keep logs in a dry place and off the ground if possible. Two separate piles based on future use are recommended:

- ✓ **Timber use:** trunks at least 4 feet long
- ✓ **Para uso artesanal:** trunks less than 4 feet long



For more information contact:  
Magaly Figueroa, Program Manager  
State and Private Forestry Program  
Forest Service, International Institute of Tropical Forestry  
(787) 764-7718, (787) 309-9565, [magaly.figueroa@usda.gov](mailto:magaly.figueroa@usda.gov)

William Gould, Director  
USDA Caribbean Climate Hub  
Forest Service, International Institute of Tropical Forestry  
(787) 764-7790, [william.a.gould@usda.gov](mailto:william.a.gould@usda.gov)



# Which trees are economically valuable?



**Most species found in Puerto Rico have economic value. Some examples are:**

- Acacia (*Albizia spp.*)
- Almond, Almendro (*Terminalia catappa*)
- Bulletwood, Ausubo (*Manilkara bidentata*)
- Stinking toe, Algarrobo (*Hymenaea courbaril*)
- Mahogany, Caoba (*Swietenia spp.*)
- Spanish elm, Capá Prieto (*Cordia alliodora*)
- White cogwood, Caracolillo (*Homalium racemosum*)
- Spanish Cedar, Cedro hembra (*Cedrela odorata*)
- Eucalyptus, Eucalipto (*Eucalyptus robusta*)
- Four leaf buchenavia, Granadillo (*Buchenavia capitata*)
- American muskwood, Guaraguao (*Guarea guidonia*)
- Mango, Mangó (*Mangifera indica*)
- Cabbagebark tree, Moca (*Andira inermis*)
- Antilles calophyllum, María (*Calophyllum calaba*)
- Doncella, Maricao (*Brysonima spicata*)
- White cedar, Roble (*Tabebuia heterophylla*)
- Pine, Pino (*Pinus caribaea*)
- Gregorywood, Úcar (*Bucida buceras*)

**Additional uses of fallen trees and vegetative debris that provide economic benefit include:**

- ✓ Compost
- ✓ Mulch
- ✓ Wood chips
- ✓ Charcoal
- ✓ Biochar

