

[View this email in your browser](#)



Southwest Climate Hub Bulletin

News and events for the Southwest Hub region

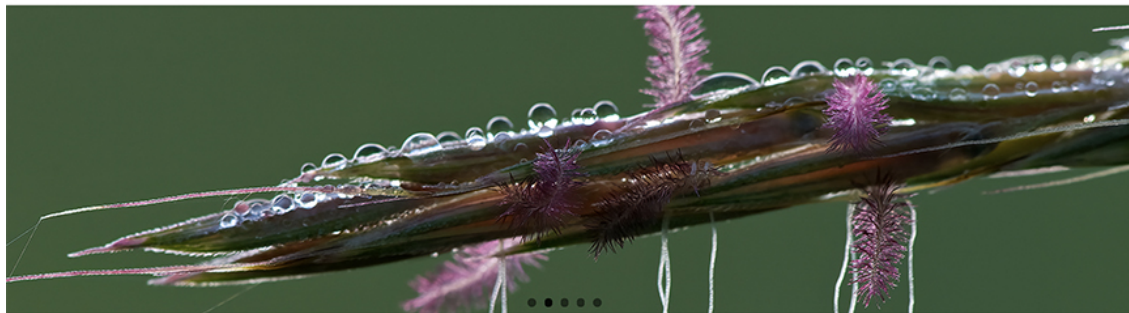
October 2020

The Native American Rangeland Training Initiative

Tribal representatives recommend that culturally relevant training and capacity building should be a priority for any comprehensive rangeland conservation strategy on Native American rangelands. The **Native American Rangeland Training Initiative** project aims to address training and education needs by providing online and field courses, rangeland management toolkits for outreach, an inter-tribal informational website, and an assessment for an accredited online soil and rangeland ecology course for tribal students. [Read more.](#)



home about who we are training **Register Here!** resources tribal college support contact us



<p>Online Courses</p> <p>Register Here! Free online rangeland ecology courses for Tribal staff, faculty, and liaisons, designed to equip you for your job.</p>	<p>Resource Library</p> <p>Reference materials, how-to manuals, and other support that tribal staff and members may use for range management of tribal lands.</p>	<p>Outreach Toolkits</p> <p>Videos, print materials, and other resources focused on rangelands that tribal staff may use for community outreach and education. <i>Coming soon!</i></p>	<p>Our Partnerships</p> <p>Learn about our partnerships with tribal organizations and public agencies that provide valuable perspective and support to our program.</p>
--	--	---	--

To Partner. Strengthen. Encourage. Empower. Equip.

This initiative facilitates collaboration between federal agencies, universities and colleges, and non-profit organizations to support our stakeholders – Native American Tribes and their governments – in the implementation of a strategy that supports the sustainable management of rangelands in Indian Country. Our Tribal stakeholders agreed that it was essential to train and support Tribal staff in their efforts to manage their rangelands and other natural resources. [Click here](#) to learn more about the partnership.

Supporting Climate Change Mitigation Through K-12 Student Education

[Subscribe](#)
[Past Issues](#)
[Translate ▼](#)


makers and powerful agents of change within their own families. Our team has developed three scientifically rigorous, hands-on, and freely available climate change units for secondary students in informal or formal education settings.

[Learn more.](#)

Feral swine bomb?



Feral pig and piglets by Craig O'Neal is licensed under CC BY-NC-ND 2.0

Feral pigs, wild hogs, razorbacks, old world swine, wild boar... feral swine go by many names but they are all the same species as domesticated pigs found on farms: *Sus scrofa*. Feral swine are dangerous, destructive and invasive and they are a nationwide problem. The damage they do to agricultural crops reduces productivity, and the disturbance they cause in natural ecosystems reduces resilience to the impacts of climate change and extreme weather events. [Read more](#) about where these wild hogs

originated from, what APHIS is doing in response to expanding feral swine populations, and access a list of feral swine resources.

Planting Gardens of Breadfruit

The Melai Mai initiative is an innovative partnership between communities, traditional leaders, local governments, research extensions, and the U.S. Forest Service to promote agroforestry, local food production, sustainability, and food security for local island communities in the Western Pacific. [Read more](#) about why the project started and its achievements so far.



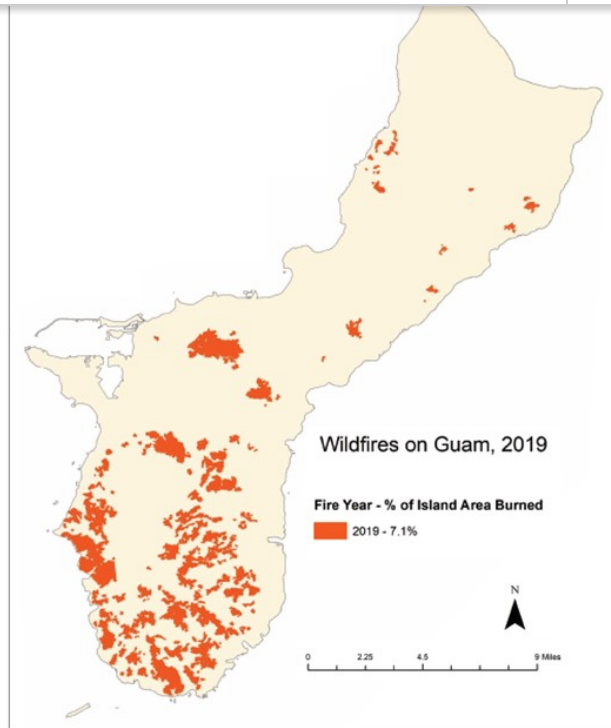
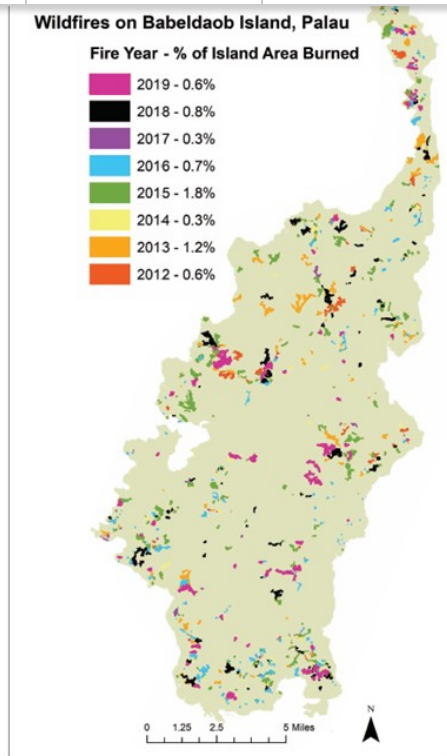
Wildfire Awareness and Prevention in the Western Pacific

Wildfires caused by humans, climatic shifts, and increases in fire-prone vegetation are a growing issue within the U.S. affiliated Pacific Islands (USAPI). Island wildfires might burn a smaller area than the fires we see in the mainland U.S. but relatively speaking, they burn a much greater percentage of the available land. [Read more](#) about the U.S. Forest Service Institute of Pacific Islands Forestry's strategies for tackling the wildfire problem in the USAPI.

Subscribe

Past Issues

Translate ▼



Navigating Covid-19 for NM Beef Producers, Part III: Options for Selling Beef Off the Ranch

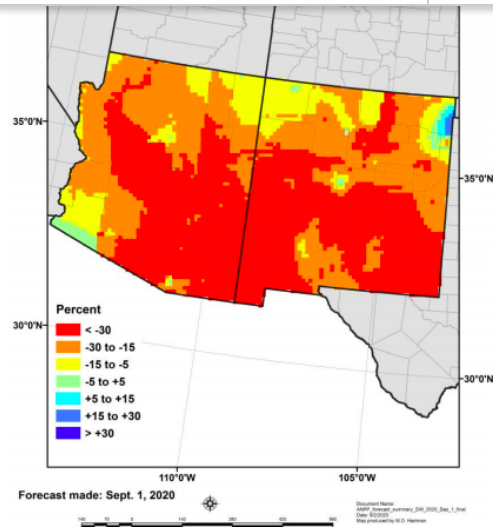
“COVID-19 disrupted beef supply chains and now I can’t get my cattle off the ranch!” In July, the Sustainable Southwest Beef Project and New Mexico State University Cooperative Extension Services responded to requests from cattle growers who are encountering difficulties marketing their livestock through their usual supply chains by hosting a webinar *Navigating Covid-19 for NM Beef Producers, Part III: Options for Selling Beef Off the Ranch*. A recorded version of the webinar is available [here](#).



New Grass-fed Beef Producers Map



The Extension team of the Sustainable Southwest Beef Project has been working to better understand the characteristics of grass-fed operations in the southwest and southern plains regions. As part of this work, we developed a dynamic map of grass-fed beef producers.

[Subscribe](#)
[Past Issues](#)
[Translate ▼](#)


Come Rain or Shine!



The Southwest Climate Hub and the Southwest Climate Adaptation Science Center have partnered up to produce a monthly podcast, **Come Rain or Shine**. We highlight stories to share the most recent advances in climate science, weather and climate adaptation, and innovative practices to support resilient landscapes and communities. You can also find our podcast on iHeartRadio, Pandora, or Spotify. Stay tuned for a new topic each month!

This month's episode is **2020 Fire Season: Grim, Smoky, Flexible**. Tim Brown, Royce Fontenot, and Megan Friggens share their impressions of the current fire season and discuss their work with pre-fire

preparedness, active fire management, and post-fire recovery.

Here are the other episodes that are available: **The Sustainable Southwest Beef Project**, **Precision Ranching Technologies**, and **USDA Rural Development: Financing Climate Adaptation**.

The Drought Learning Network

At least 95% of resource managers want to hear from peers about lessons learned during drought. The Drought Learning Network (DLN) is a new consortium of climate service providers and resource managers building resilience to drought with intentional peer-to-peer knowledge exchange: read more [here](#) about recent DLN activities.

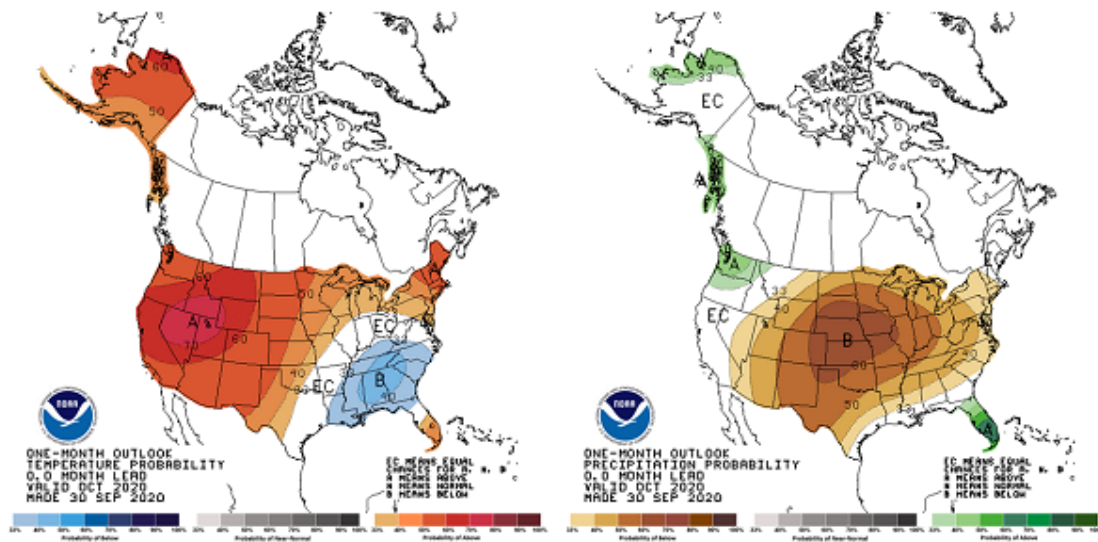


El Niño/Southern Oscillation (ENSO)

As of September 10, 2020, ENSO has been updated to [La Niña Advisory](#). La Niña conditions are here and are likely to continue through winter at about 75% chance. Learn more about additional ENSO perspectives and analysis available at the NOAA [ENSO Blog](#) and the [ENSO Tracker - September 2020](#), an analysis by [CLIMAS](#).

1-month outlook

As of September 30, the [one-month outlook](#) for October shows a 50-70% chance for above-normal temperature for the entire southwestern U.S. There will be a 50% chance for below-normal precipitation for New Mexico and a 33-40% chance of below-normal precipitation for Arizona, Utah, and the eastern half of Nevada.



3-month outlook

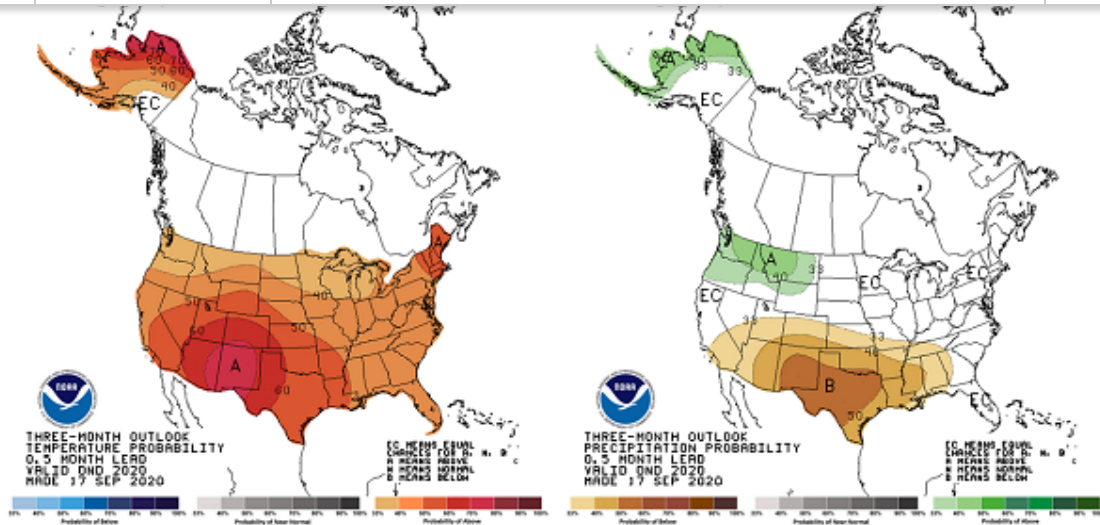
As of September 17, the [three-month outlook](#) (Oct-Nov-Dec 2020) shows a 50-70% chance of above-normal temperatures for the southwestern U.S. There will be an equal chance of precipitation for northern Nevada and a 33-50% chance for below-normal precipitation for much of Utah, Arizona, and New Mexico.

These outlooks are created monthly by NOAA Climate Prediction Center and based on departures from the 1981-2010 base period. To view more short-term outlooks, please visit the [NOAA's National Weather Service Climate Prediction Center](#).

Subscribe

Past Issues

Translate ▾



Drought

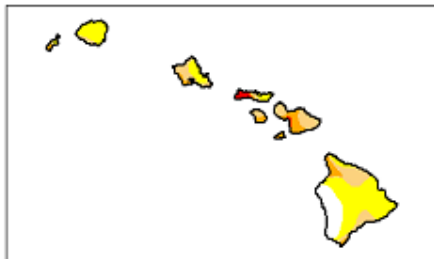
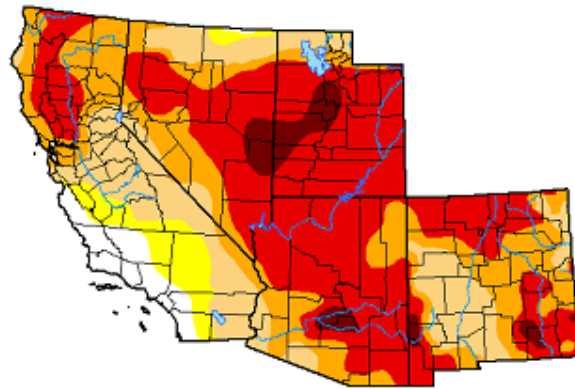
Over the last 2 months, drought conditions have intensified across Arizona, Utah, Nevada, and New Mexico. In Hawai'i, drought conditions have remained in the D0-D3 conditions. You can also view the [U.S. Drought Monitor Class Change map](#) to see how conditions have improved or degraded in your area over a period of time. For a more detailed drought summary, visit the U.S. Drought Monitor [website](#).

**U.S. Drought Monitor
USDA Southwest Climate Hub**

September 29, 2020

(Released Thursday, Oct. 1, 2020)

Valid 8 a.m. EDT



Drought Conditions (Percent Area)

	None	D0-D4	D1-D4	D2-D4	D3-D4	D4
Current	4.30	95.70	90.15	70.64	46.91	4.14
Last Week 09-22-2020	4.39	95.61	90.09	68.50	39.73	2.51
3 Months Ago 06-30-2020	32.83	67.17	49.43	25.71	3.14	0.00
Start of Calendar Year 12-31-2019	70.92	29.08	18.32	10.73	0.01	0.00
Start of Water Year 10-01-2019	57.55	42.45	27.33	6.37	0.02	0.00
One Year Ago 10-01-2019	57.55	42.45	27.33	6.37	0.02	0.00

Intensity:

- None
- D0 Abnormally Dry
- D1 Moderate Drought
- D2 Severe Drought
- D3 Extreme Drought
- D4 Exceptional Drought

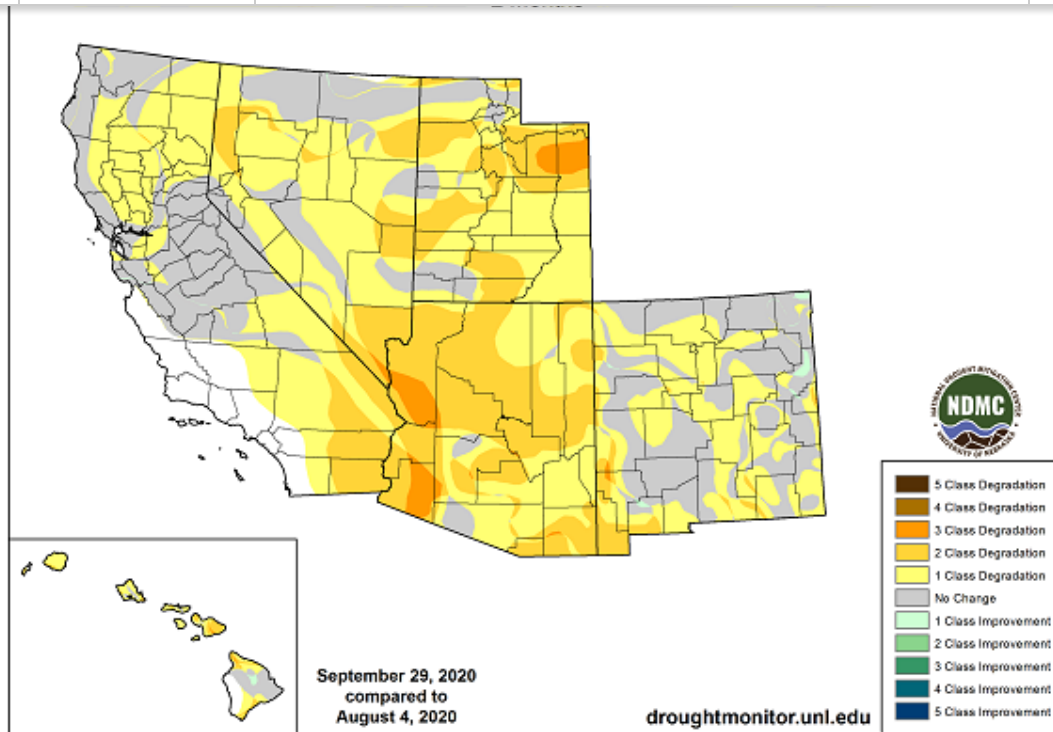
The Drought Monitor focuses on broad-scale conditions. Local conditions may vary. For more information on the Drought Monitor, go to <https://droughtmonitor.unl.edu/About.aspx>

Author:

Brad Rippey
U.S. Department of Agriculture



droughtmonitor.unl.edu

[Subscribe](#)[Past Issues](#)[Translate ▼](#)

Announcements



Online Adaptation Planning and Practices for Hawai'i Forests and Native Ecosystems

The Northern Institute of Applied Climate Science and USDA Northern Forests and Southwest Climate Hubs are offering the [Adaptation Planning and Practices](#) training as an online course for land managers in Hawai'i (in a series of seven 1-hour sessions beginning in January 2021). This unique opportunity provides hands-on training in considering climate change information and identifying adaptation actions for natural resources management professionals working in forests and native ecosystems of Hawai'i. Participants will receive coaching and feedback on their own real-world climate adaptation projects throughout the course.

By the end of the course, participants will be able to:

- Identify locally-important climate change impacts, challenges, and opportunities

[Subscribe](#)[Past Issues](#)[Translate ▼](#)

- Better communicate with stakeholders about key climate change impacts, challenges, and opportunities
- Access post-training support from NIACS and Climate Hub staff during project planning and implementation

Register here! For more information, contact [Courtney Peterson](#).

Sustainable Southwest Beef Project Virtual On-Ranch Demo **December 1st, 2020, 9:00-11:00 am MT.**

Highlights from the Sustainable Southwest Beef Project, virtual tour of the Clayton Livestock Research Center, and presentations on wheat, soil health, and local aquifers. Contact [Skye Aney](#) for a Zoom link.

Invitation to Join NIDIS Stakeholder Feedback Sessions

National Integrated Drought Information System (NIDIS) will be holding a series of virtual discussions for stakeholders in the Intermountain West, each focused on a topic area.

- Wednesday, 28 October @ 10:00am (MDT) — Colorado River
- Thursday, 29 October @ 10:00am (MDT) — Water Managers (outside colorado river management)
- Friday, 30 October @ 10:00am (MDT) — Energy and Industry
- Monday, 2 November @ 10:00 (MST) — Agriculture: Farming, cropping, horticulture and irrigation
- Monday, 2 November @ 2:30pm (MST) — Agriculture: Livestock, dairy, poultry, etc.
- Tuesday, 3 November @ 1:00pm (MST) — Natural Lands—Ecology, forestry, fish/wildlife, wildfire, etc.
- Thursday, 5 November @ 10:00am (MST) — Rec and Tourism

Each discussion will run for about an hour, with excess time built in to the meeting in case the discussions run over the hour. Please come prepared to share your frank perspectives on Drought Early Warning: What's working, what's not working and what changes are the priority?

Please RSVP [using this form](#) or you can email [Joel Lisonbee](#).

Funding Opportunities

Announcement for Program Funding for NRCS' Feral Swine Eradication and Control Pilot Program for Federal fiscal year (FY) 2021

Award Ceiling: \$1,500,000

Deadline: November 05, 2020

WaterSMART Cooperative Watershed Management Program Phase II

Award Ceiling: \$300,000

Deadline: November 17, 2020

Water Conservation Services, Lower Colorado Basin Region

Award Ceiling: \$100,000

[Subscribe](#)[Past Issues](#)[Translate ▼](#)

[Agriculture and Food Research Initiative - Foundational and Applied Science](#)

Estimated Total Program Funding: \$290,000,000

Deadline: July 29, 2021, Conference Grants - Letter of Intent required, Letter of Intent Deadline - Minimum of 195 days before the conference begins; Application Deadline Dates - Dates vary by program.

Webinars and Virtual Conferences

[2020 Empowering Tribal Culture, Ecology, And Food Systems Webinar Series](#), September 30 - October 28 at 12:00 pm MT

[Rocky Mountain Research Station Land Manager-Focused Fall Webinar Series](#), October 14 - December 9 at 10:00 am MT

[National Adaptation Forum: Climate Displacement Forum Series](#), October 15 - November 5 at 12:00 pm MT

[NOAA's 45th Climate Diagnostics and Predictions Workshop](#), October 20-22

[65th Annual New Mexico Water Conference](#), October 26-29

[Virtual Adaptive Ag Water Symposium](#), November 6

[2020 Jornada Virtual Symposium](#), November 12

[The Cultural Significance of Humpback Whales in Hawai'i](#), November 30 at 3:00 pm ET

[AGU Fall Meeting 2020](#), December 1-17

[Intertribal Agriculture Council](#), December 8-10

[AMS 101st Annual Meeting](#), January 10-14, 2021

Join our mailing list



Copyright © 2020 USDA Southwest Climate Hub, All rights reserved.

Want to change how you receive these emails?
You can [update your preferences](#) or [unsubscribe from this list](#).