

[View this email in your browser](#)

Southwest Climate Hub Bulletin

News and events for the Southwest Hub region

October 2019



In May 2016, we selected Julian Reyes from a pool of highly-qualified applicants to serve as the first USDA Southwest Climate Hub fellow. During his time with the Hub, Julian honed his technical and outreach skills while completing his doctoral degree. He was perpetually willing to help colleagues, join in special projects and participate in critical initiatives. Here are a few highlights of his outstanding accomplishments as part of the SWCH team:

- Served as lead or co-author on 11 publications submitted to peer-reviewed journals and 16 abstracts presented at scientific conferences.
- Developed a multi-agency project involving analysis of crop insurance payments, outreach to commodity groups using these data, and tool development to make the data broadly accessible, leading to the [AgRisk Viewer](#), a web-based platform for users to easily download, view, and analyze the crop insurance data by different causes of loss (e.g., drought, hail, wind) and crop over time and space.
- Led a working group at the National Adaptation Forum focused on managing resources in a changing climate. An output was a [peer-reviewed article](#) addressing operational gaps and opportunities for federal coordination networks, such as the Climate Hubs, to effectively support Tribes' agricultural and natural resource management. Julian forged important relationships leading to additional tribal climate change training.
- Served as the primary convener for a [session](#) designed to provide a platform for scientists, practitioners, land managers, extension professionals, and community members to share how collaborative partnerships have led to more actionable and decision-relevant science at the 2017-2019 American Geophysical Union fall meetings.

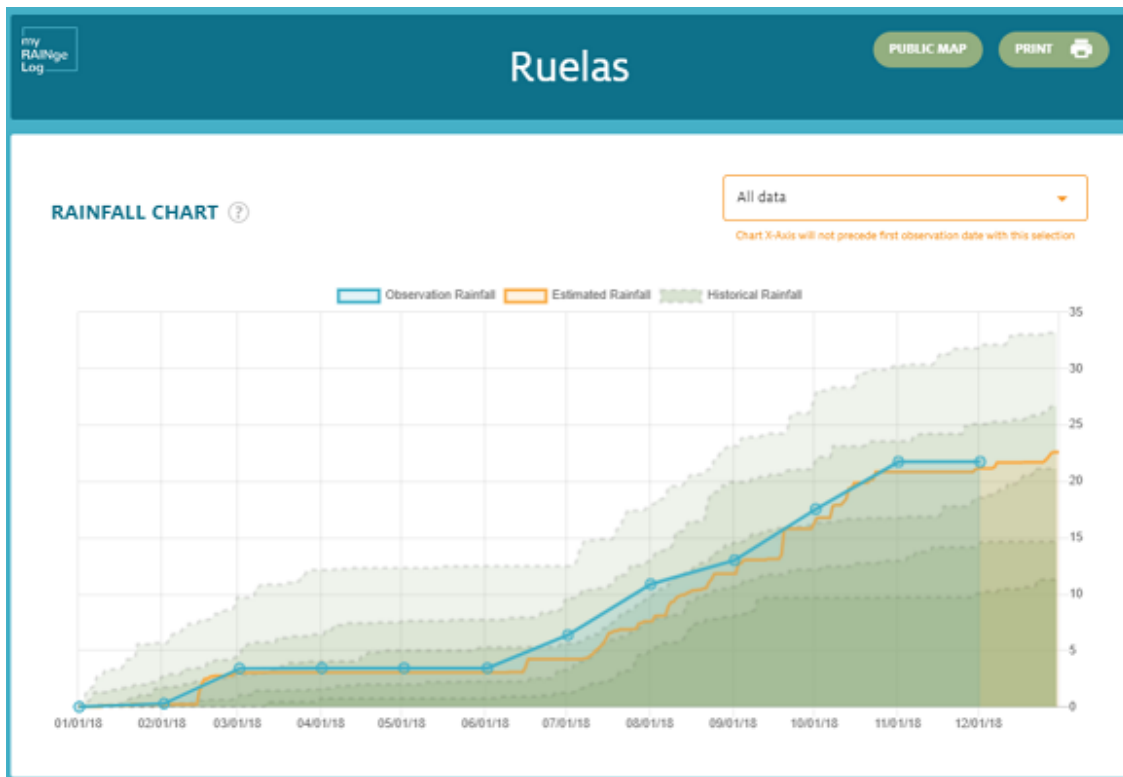
Later this month Julian will start a new journey in Washington, DC as an [AAAS Science and Technology Policy Fellow](#). The AAAS program places top scientists and engineers in both Congress and federal agencies and is hosting its 47th cohort. Julian will be in the

(IPCC) reports, and technical review of various scientific reports.

In this new chapter, Julian says “I’m very excited to really lend my voice and skills in the international climate policy arena using what I’ve learned at the local to regional scales.” On his time in southern New Mexico, Julian will miss his colleagues at the Hub and Jornada Experimental Range, and those beautiful sunsets against the Organ Mountains. Julian will continue his favorite past time - running - but he’ll trade in the Rio Grande for the Potomac River. Beyond Julian’s outstanding accomplishments over the past three years, he is a true team player and a delightful colleague. We will miss his positive attitude, honest wit, and collaborative spirit.

Julian Reyes featured on the Southern Plains Podcast

SWCH Fellow Julian Reyes recently spoke with Clay Pope on the [Southern Plains Podcast](#) about the AgRisk Viewer and how crop insurance data can be helpful in agricultural risk management.



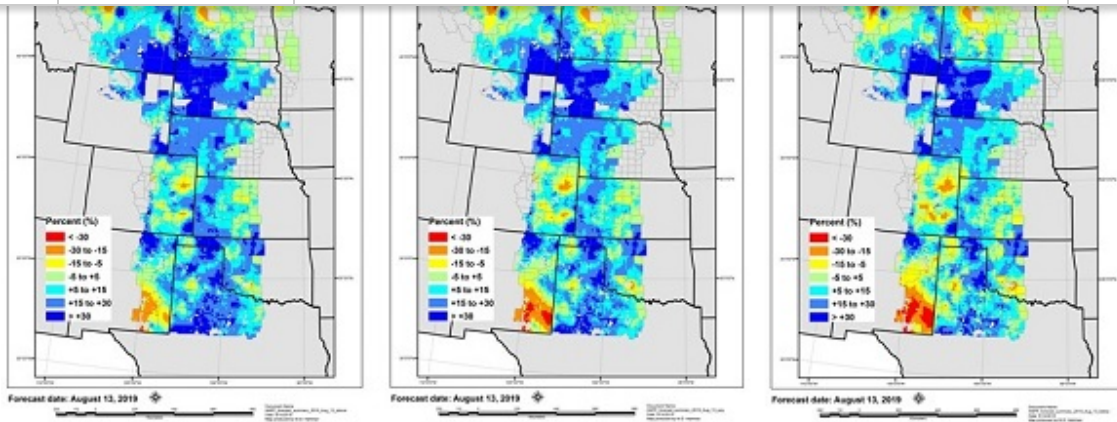
myRAINge Log: Precipitation Tracking Tool for Range Management

[MyRAINge Log](#) is an online tool for precipitation tracking co-developed by Mike Crimmins with ranchers and land managers in Arizona. It is “An easy-to-use tool to help you track your actual rainfall so you can better manage your land”... [Read more >>](#)

Subscribe

Past Issues

Translate ▼



Grass-Cast: A New, Experimental Grassland Productivity Forecast Expanding to the Southwest Region

Since May 2018, an innovative new Grassland Productivity Forecast or “[Grass-Cast](#)” has been helping producers in the Northern Great Plains reduce this economically important source of uncertainty. Grass-Cast is now expanding to the Southwest region and will soon be available to producers in New Mexico and Arizona. [Read more >>](#)

[Subscribe](#)[Past Issues](#)[Translate ▼](#)

Community Forests Climate Change Adaptation Workshop

The USDA Southwest Climate Hub is collaborating with the City of Durango Parks and Recreation Department, Colorado State University, and the Northern Institute of Applied Climate Science to facilitate an active, hands-on [workshop](#) to explore climate change impacts and potential adaptation actions for Durango's community forests. [Read more >>](#)

[Subscribe](#)[Past Issues](#)[Translate ▼](#)

Credit: Robert Webster - xpda.com - CC-BY-SA-4.0

Investments in Native Forb Research to Promote Pollinator Health

SWCH co-director Bryce Richardson describes native forb restoration research and its importance for pollinator health. [Read more >>](#)

[Subscribe](#)[Past Issues](#)[Translate ▼](#)

Two Decades of Devastating Drought in Hawai'i

Drought has caused millions of dollars' worth of damage in Hawaii in the past 20 years. [A particularly severe event from 2007-2014 was especially damaging to ranching in the state.](#) Learn more from <https://www.hawaiipublicradio.org/post/cost-hawaiis-record-breaking-drought-reaches-millions#stream/0>

Managing Rangelands in the Face of Drought

Joel Brown, SWCH NRCS co-leader, presented "managing rangelands in the face of drought" to the Southwest Intertribal Agriculture Council annual conference (Albuquerque, NM). Dr. Brown introduced the group to several tools available through the Climate Hubs ([AgRisk Viewer](#), [Grass-Cast](#), [Ecological Site Interpretations](#)) in the context of making timely grazing management decisions to account for weather fluctuations. About 100 land managers and technical advisors attended the presentation. Helena Deswood, SWCH Tribal Coordinator also hosted an information table at the conference to share information about [myRAINge Log](#) and enroll tribal farmers and ranchers in the [CoCoRaHS Network](#).

Jornada wins an award for Solar Project

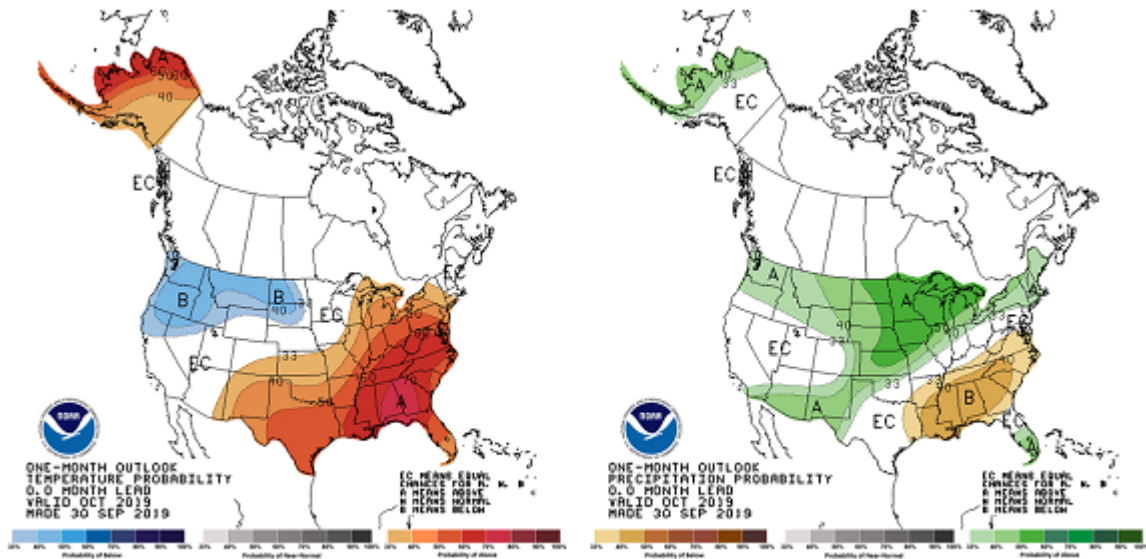
The Southwest Hub is based at the USDA-ARS Jornada Experimental Range. The Jornada was awarded a Federal Energy and Water Management Award for an 80 kW solar project that powers the Jornada ranch. The ranch is the first ARS facility to receive such an award and be a net-zero electricity facility. [Read More >>](#)

Climate reporting for the Southwest

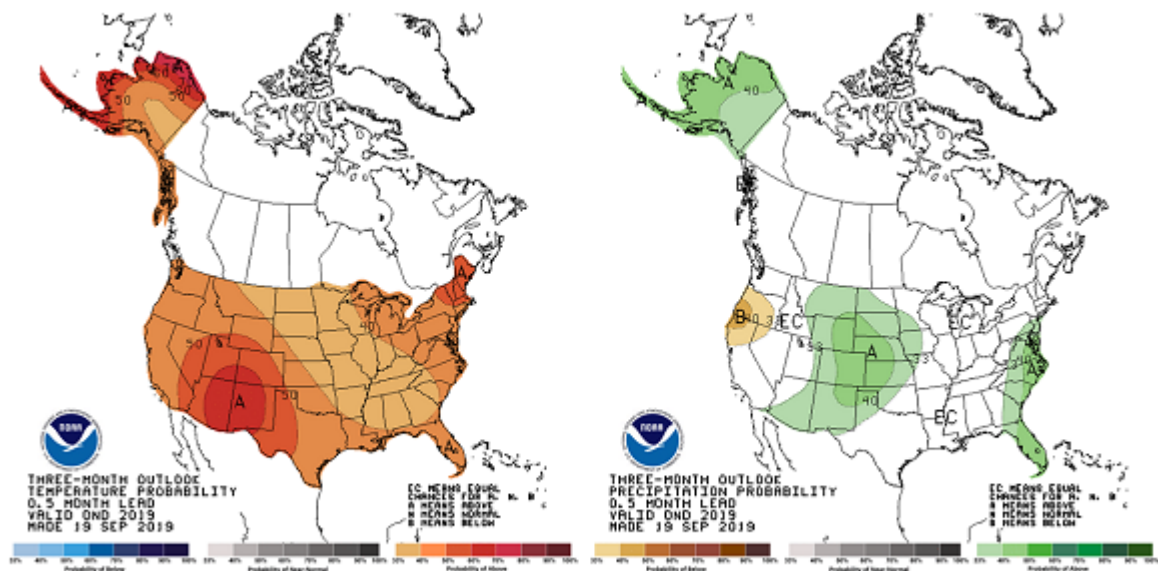
We are currently in an [ENSO-neutral status](#) and forecasters estimate there will be about a 75% chance of an ENSO-neutral outlook for fall 2019 and to continue into spring 2020. Read more about [ENSO Tracker - September 2019](#), an analysis by [CLIMAS](#) (Climate Assessment

normal temperatures for New Mexico and southeastern Arizona. There will be an equal chance for precipitation for Nevada, Utah, and the Four Corners region. The southern portions of Arizona and New Mexico will have 33-40% above-normal precipitation. As of September 19, the [three-month outlook](#) (Oct-Nov-Dec 2019) shows a 40-60% chance of above-normal temperatures for the southwest and a 33% chance for above-normal precipitation for Arizona and New Mexico. These outlooks are created monthly by NOAA Climate Prediction Center and based on departures from the 1981-2010 base period. To view more short-term outlooks, please visit the [NOAA's National Weather Service Climate Prediction Center](#).

1-month outlook



3-month outlook



Drought

Drought conditions remain in Arizona, New Mexico and much of Utah with widespread coverage of drought conditions of D0-D2. In Hawai'i, portions of the islands remain in drought conditions of D0-D3. You can view how the maps change from a week to months using

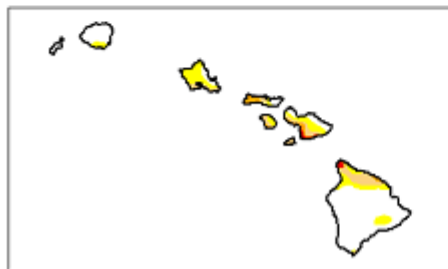
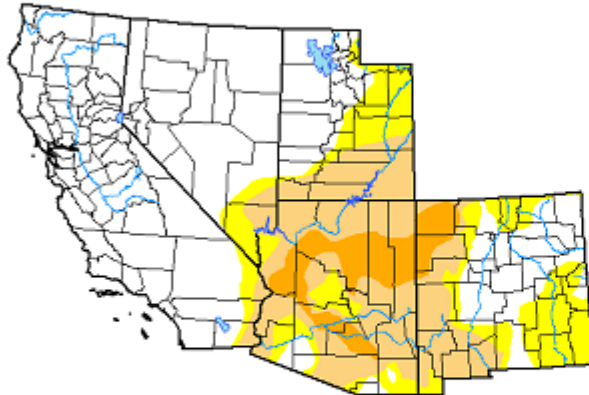
Subscribe

Past Issues

Translate ▾

Monitor [website](#).

U.S. Drought Monitor USDA Southwest Climate Hub



October 1, 2019

(Released Thursday, Oct. 3, 2019)

Valid 8 a.m. EDT

Drought Conditions (Percent Area)

	None	D0-D4	D1-D4	D2-D4	D3-D4	D4
Current	57.55	42.45	27.33	6.37	0.02	0.00
Last Week 09-24-2019	56.71	43.29	26.88	6.40	0.02	0.00
3 Months Ago 07-02-2019	91.13	8.87	2.26	0.04	0.01	0.00
Start of Calendar Year 01-01-2019	11.98	88.02	71.21	29.87	8.08	3.78
Start of Water Year 10-01-2018	57.55	42.45	27.33	6.37	0.02	0.00
One Year Ago 10-02-2018	5.39	94.61	73.72	47.89	21.03	5.85

Intensity:

- None
- D0 Abnormally Dry
- D1 Moderate Drought
- D2 Severe Drought
- D3 Extreme Drought
- D4 Exceptional Drought

The Drought Monitor focuses on broad-scale conditions. Local conditions may vary. See accompanying text summary for forecast statements.

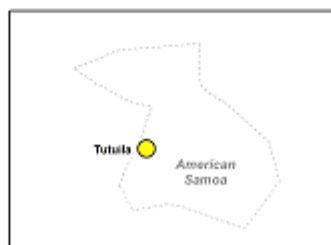
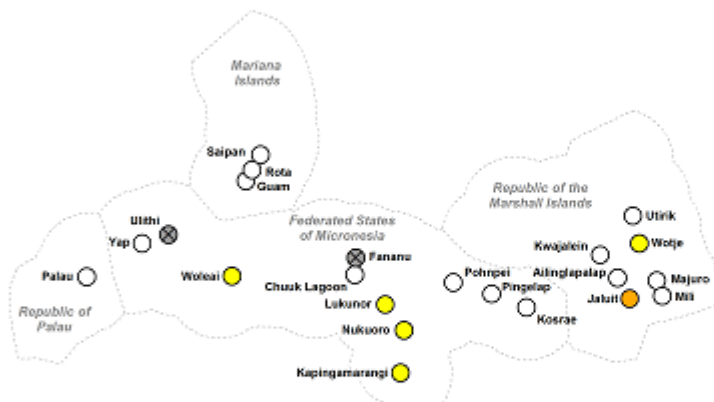
Author:

Brian Fuchs
National Drought Mitigation Center



droughtmonitor.unl.edu

U.S. Drought Monitor U.S. Affiliated Pacific Islands



October 1, 2019

(Released Thursday, Oct. 3, 2019)

Valid 8 a.m. EDT

Intensity:

- No Data
- No Drought or Dryness
- D0 - Abnormally Dry
- D1 - Moderate Drought
- D2 - Severe Drought
- D3 - Extreme Drought
- D4 - Exceptional Drought

The Drought Monitor focuses on broad-scale conditions. Local conditions may vary. See accompanying text summary for forecast statements.

Author:

Ahira Sanchez-Lugo
NCEI/NOAA

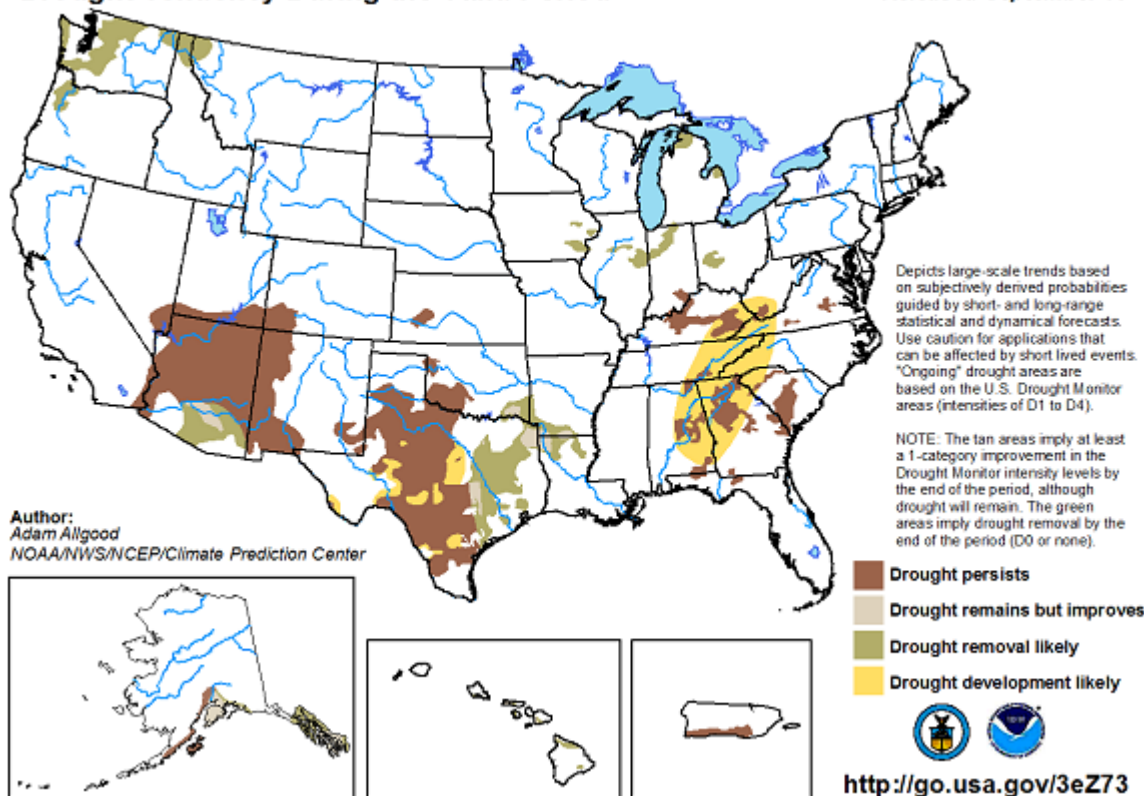


droughtmonitor.unl.edu

U.S. Seasonal Drought Outlook

Drought Tendency During the Valid Period

Valid for September 19 - December 31, 2019
Released September 19



Announcements

NRCS Employees: Seeking applicants for USDA Climate Hub Liaison detail for 2020

NRCS supports the 10 USDA Climate Hubs each year by providing three employees as "Agency Project Liaisons." The selected employees are on detail for the calendar year, remain at their current duty station, and under NRCS supervision and funding, but work full time directly with a specific Climate Hub on a focused project that provides benefits to both NRCS and the USDA Climate Hub. This detail is open to all employees regardless of grade, but applicants should be capable of creating their own workload, functioning independently, and managing their time. [More information](#)

Western Native Youth Food Sovereignty Summit

The Western Region Youth Summit is organized by Intertribal Agriculture Council and hosted by the Yavapai Apache Nation. The summit is open to high school and college aged youth age 13 to 22 and will be held on October 18-20, 2019, at Camp Verde, AZ. [Register here.](#)

Funding Opportunities

Forest Service - Landscape Scale Restoration RFA 2020, USDA FS

Estimated Total Program Funding: \$3,800,000

Deadline: October 11, 2019

[More information](#)

[Subscribe](#)[Past Issues](#)[Translate ▼](#)[More information](#)**WaterSMART Drought Response Program: Drought Resiliency Projects for Fiscal Years 2020 and 2021**

Award Ceiling: \$750,000

Deadline: October 16, 2019[More information](#)**Tribal Colleges Research Grants Program, NIFA**

Estimate Total Program Funding: \$3,700,000

Deadline: November 1, 2019[More information](#)**Regional Conservation Partnership Program (RCPP) for Federal Fiscal Year 2019**

Award Ceiling: \$10,000,000

Deadline: December 3, 2019[More information](#)**Foundational and Applied Science Program, AFRI**

Range of Awards: Up to \$1,000,000

Deadline: December 18, 2019[More information](#)

Events

- **October 8-10** - [Northwest Climate Conference](#) Portland, OR
- **October 10-12** - [American Indian Science and Engineering Society Conference](#) Milwaukee, WI
- **October 17** - [Agriculture Resiliency Before, During, and After Drought](#) Cortez, CO
- **October 18-19** - [Agricultural Resilience Clinic with Nicole Masters](#) Hunt, TX
- **November 5-7** - [Introduction to Climate Change Adaptation Planning](#) Anacortes, WA
- **November 5-7** - [National Tribal Conservation District Conference](#) Catoosa, OK
- **November 6-8** - [New Mexico Water Conference](#) Pojoaque, NM
- **November 19-22** - [Regenerate 2019](#) Albuquerque, NM
- **December 2** - [Adapted Trees Workshop](#) Durango, CO
- **December 9- 13** - [American Geophysical Union](#) San Francisco, CA
- **December 9-12** - [Intertribal Agriculture Council](#) Las Vegas, NV
- **January 12-16** - [American Meteorological Society](#) Boston, MA
- **January 20-23** - [Southwest Indian Agricultural Association](#) Laughlin, NV
- **February 16-20** - [Society for Range Management Annual Meeting](#) Denver, CO

Webinars

- **October 9, 1:00 pm ET** - [Oak decline in the United States](#)
- **October 16, 2:00 pm ET** - [Benefits of Using Satellite Imagery for Making Better Crop Management Decisions](#)
- **October 17, 3:00 pm ET** - [Dry Farming Organic Vegetables](#)

Subscribe

Past Issues

Translate ▼

- **October 28, 1:00 pm CT** - [Climate Change's Affect on Field Crop Diseases](#)
- **November 25, 11:00 am PT** - [California-Nevada Drought & Climate Outlook](#)

Join our mailing list



climatehubs.usda.gov



Follow us [@USDAClimateHubs](#)

Copyright © 2019 USDA Southwest Climate Hub, All rights reserved.

Want to change how you receive these emails?
You can [update your preferences](#) or [unsubscribe from this list](#).

This email was sent to <<Email Address>>

[why did I get this?](#) [unsubscribe from this list](#) [update subscription preferences](#)

USDA Southwest Climate Hub · P.O. Box 30003, MSC 3JER, NMSU · Las Cruces, NM 88003 · USA

