



Grass-Cast: Grassland Productivity Forecast

USDA NORTHERN PLAINS, SOUTHERN PLAINS, AND SOUTHWEST CLIMATE HUBS

WHY

Each spring, ranchers face the challenge of estimating how much grass will grow for their livestock to graze during the upcoming summer. Grass-Cast helps ranchers reduce economic uncertainty about important economic decisions by forecasting seasonal grassland productivity.

WHAT

Grass-Cast helps ranchers anticipate whether forage production (pounds per acre) is likely to be above-normal, near-normal, or below-normal in the upcoming growing season. Grass-Cast is first released in the spring and updated every two weeks using newly observed weather data. It becomes more accurate as the growing season unfolds, so is most helpful when consulted regularly.



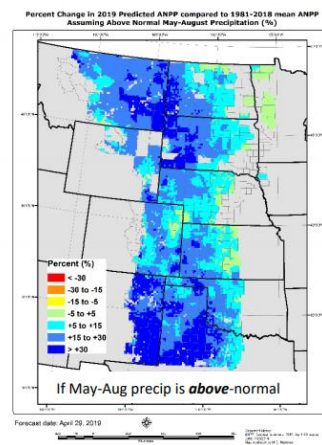
BENEFITS

Reliable:
based on 36
years of
historical data

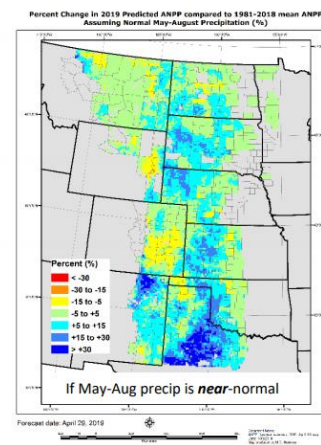
Available:
for seasonal
planning of
forage supply

Useful:
reaching 2,500
users per year

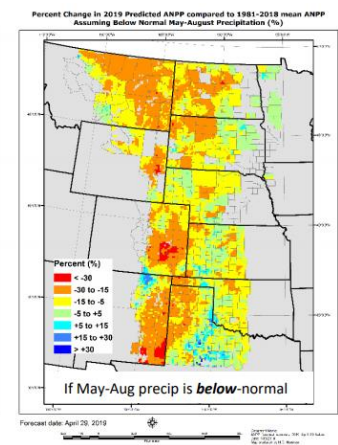
GRASS-CAST MAPS



Above-normal rainfall scenario.



Near-normal rainfall scenario.



Below-normal rainfall scenario.

PARTNERS

